

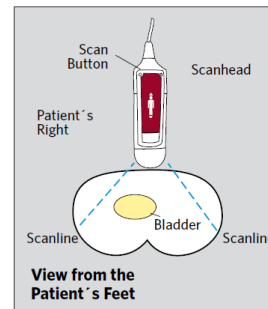
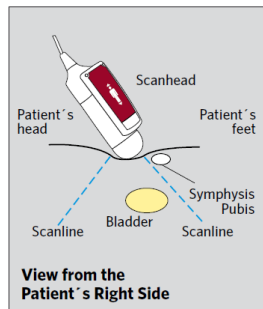
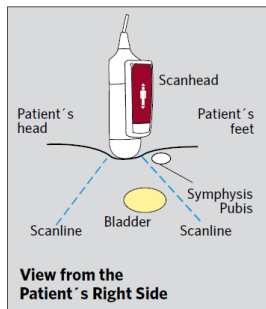
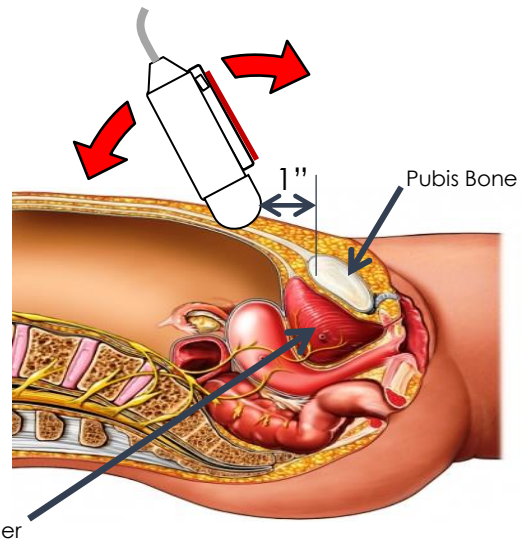
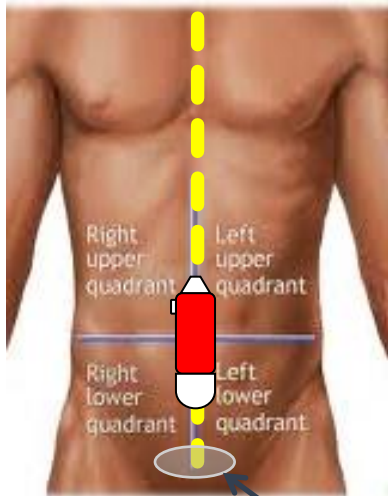
# VitaScan PD Quick Start

1

## Position the Probe

Proper probe position is essential for a good measurement:

1. Place patient in the supine position (lying on the back, face upward).
2. Find the midline position on the patient's lower abdomen.
3. Palpate the pubis bone.
4. Apply *ultrasound* gel on the probe head or on the patient's abdomen (walnut size amount recommended).
5. Place the probe head one inch above the pubis bone on the midline with the red label facing upward.

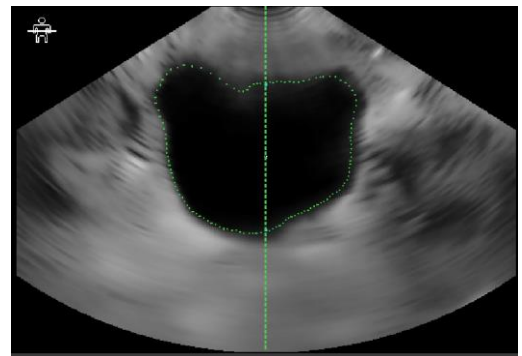


2

## Locate and Scan the Bladder

1. Select **Start** or press and release the device button to locate the bladder.
2. Angle the probe so that the bladder takes up the largest area on the screen and the green line is in the middle of the bladder and around the bladder border.
3. Keep this angle and select **Scan** or press and release the device button to make the measurement. Hold steady until two static images appear on screen (approximately 3 seconds).

**While scanning, avoid making any changes in the position, angle or pressure of the scan probe.**



### 3

#### Verify the Scan

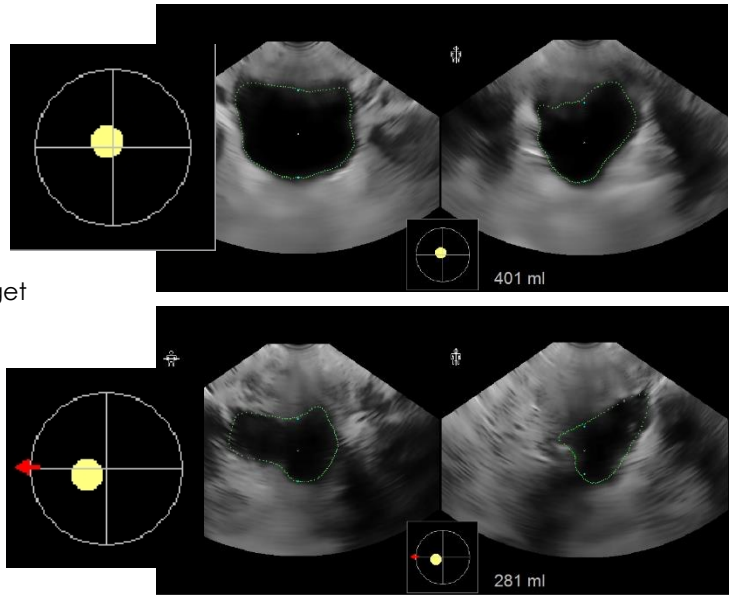
When the test is complete, two static images are displayed on the screen (vertical and horizontal planes).

For a good scan:

1. The bladder is entirely within the cone and has a defined border.
2. The yellow icon is in the center of the target crosshairs.

If you see a red arrow, re-scan and move the probe in the direction of the arrow.

If no yellow object is visible, either the bladder is empty or could not be detected; rescan or measure manually. See User's Manual for how to measure manually.



### 4

#### Clear, Clean & Park

Once you are done testing:

1. Select **Clear/Restart**
2. Remove gel from the patient's abdomen and from the probe. Use PDI Sani-cloth® AF3 Germicidal Disposable Wipes or other comparable disposable wipe designed for use on non-porous plastic surfaces. See User's Manual for complete instructions.
3. Return the scanner to its storage location and plug it in to charge.

#### Important, read before using:

- Always charge the battery before using the system, to avoid the risk of the system turning off while in use.
- The manual measurement function should be used on patients with catheters, as catheters can reflect ultrasound signals that can lead to inaccurate volume measurement.
- Use ultrasound gel, other lubricants should not be used.
- Incorrect cleaning or disinfecting of any part of the system can cause permanent damage. Do not use solvents such as thinner or benzene, or abrasive cleaners on any part of the system.
- Do not subject any part of the VitaScan PD to steam sterilization or ethylene oxide sterilization.
- Do not immerse the instrument in any cleaning or disinfecting solution.